



# Product Range Technical Information

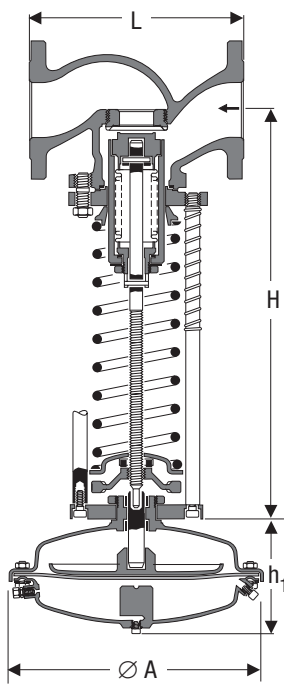
Steam Traps and Valves · Electronic Controls ·  
Automation · Special Equipment and Vessels for Heat Recovery

2024

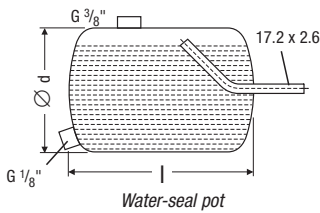


**Making Steam Smarter**  
Intelligent Solutions for  
More Efficient Products

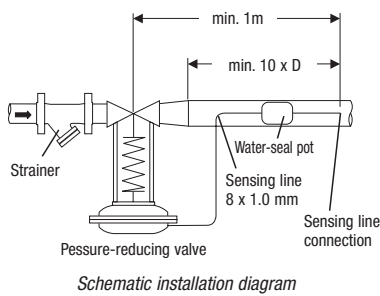
Engineering steam performance



Pressure-reducing valve 5801



Water-seal pot



Schematic installation diagram

### Application

**Type 5801** Pressure-reducing valve for use with steam and other fluids.  
In all energy and process systems.

### Design

The pressure-reducing valve is a balanced single-seat proportional controller operating without auxiliary energy.  
The pressure-reducing valve consists of a body with internals, bellows, spring, handwheel and actuator. For steam and liquids at temperatures above 100 °C a water-seal pot is required to protect the actuator diaphragm.

### Dimensions [mm] and Weights [kg] of Valve Body

DN	15	20	25	32	40	50	65	80	100	125	150	200
L	130	150	160	180	200	230	290	310	350	400	480	600
H	390	390	390	408	425	500	505	590	590	705	725	760
Weight 1.0619												
Weight 1.4581	7	8	9	12	14	19	27	40	54	82	115	176

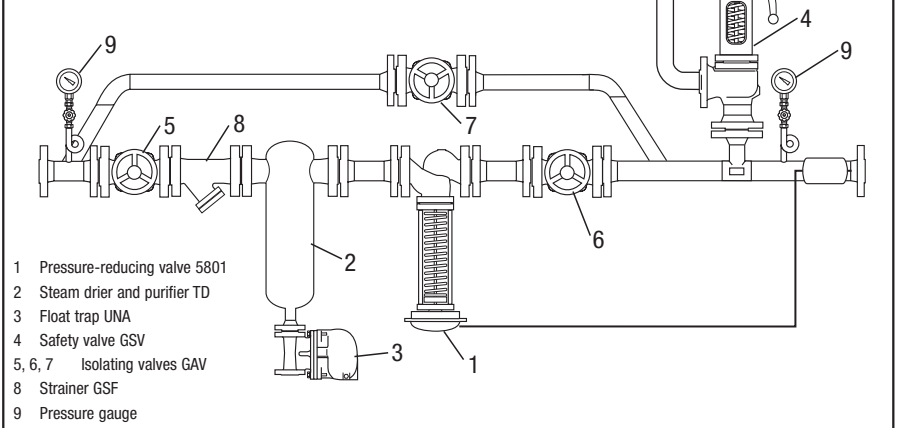
### Dimensions [mm] and Weights [kg] of Actuator

Actuator	A11	A2	A3	A4	A51	A61	B11	B2
Ø A	150	160	195	270	355	510	150	160
h <sub>1</sub>	90	100	100	120	165	200	90	110
Approx. weight	2.8	4.5	6.0	4.5	10	27.5	3.5	5.5

### Dimensions [mm] and Weights [kg] of Water Pot Seal

Size	l	d	Size DN	Weight
1	206	88.9	15 – 65	1.7
2	172	152.4	80 – 100	3.5
3	250	152.4	125 – 200	4.9

### Schematic Representation of a Compact-Design Pressure Reducing Station





## GESTRA AG

Münchener Str. 77 • 28215 Bremen • Germany  
P.O. BOX 10 54 60 • 28054 Bremen • Germany

Tel. +49 421 3503-0  
Fax +49 421 3503-393

[info@de.gestra.com](mailto:info@de.gestra.com)  
[www.gestra.com](http://www.gestra.com)

850128-04/11\_2023sxs-mm • ©2023 • GESTRA AG • Bremen • Technical modifications reserved

2391965

